

STATE OF FLORIDA SS
 COUNTY OF PALM BEACH

THIS PLAT WAS FILED FOR RECORD
 AT _____ M., THIS _____ DAY
 OF _____, 2003 AND DULY
 RECORDED IN PLAT BOOK NO. _____
 ON PAGES _____ AND _____

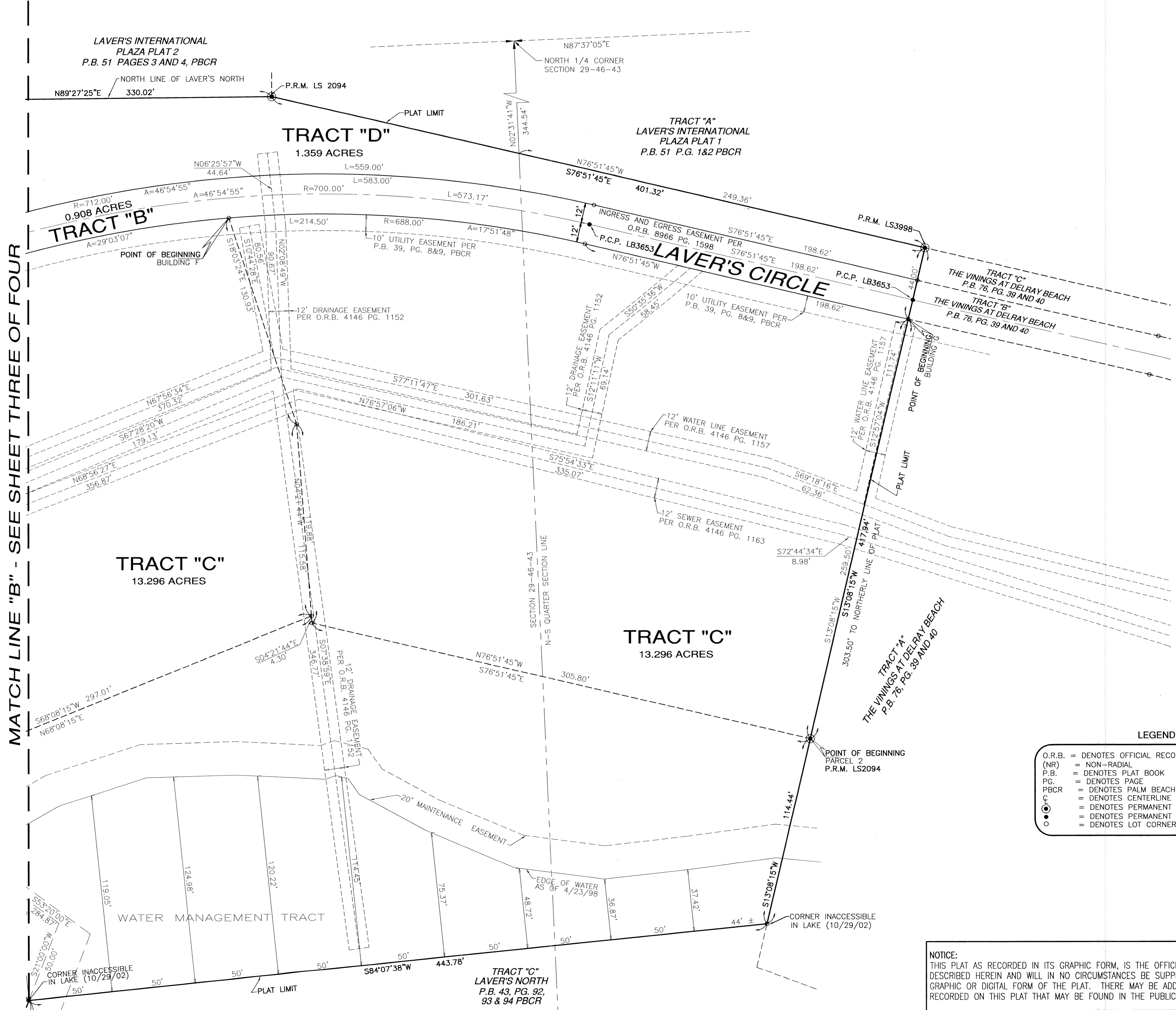
DOROTHY H. WILKEN, CLERK

BY: _____ DC

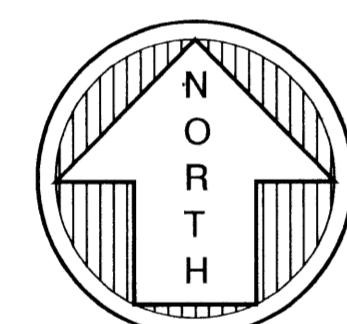
THIS INSTRUMENT WAS PREPARED BY:
FORTIN, LEAVY, SKILES, INC.
 CONSULTING ENGINEERS & SURVEYORS AND MAPPERS
 180 N.E. 168th. STREET NORTH MIAMI BEACH, FLORIDA.
 PH.: 305-653-4493 / FAX: 305-651-7152
 O.N.: (021908) T-PLAT (4002-006)
 FIELD BOOK (488/52 JWL)

LAKEVIEW APARTMENTS

A REPLAT OF A PORTION OF OF TRACTS "B", "C" AND "D"
 LAVER'S NORTH (PB 43, PGS 92, 93 & 94, PBCR)
 LYING IN SECTION 29, TOWNSHIP 46 SOUTH, RANGE 43 EAST,
 CITY OF DELRAY BEACH, PALM BEACH COUNTY, FLORIDA
 DECEMBER 2002



MATCH LINE "B" - SEE SHEET THREE OF FOUR



GRAPHIC SCALE
 (IN FEET)
 1 inch = 30 ft.

LEGEND:

- O.R.B. = DENOTES OFFICIAL RECORD
- (NR) = NON-RADIAL
- P.B. = DENOTES PLAT BOOK
- PG. = DENOTES PAGE
- PBCR = DENOTES PALM BEACH COUNTY RECORDS
- = DENOTES CENTERLINE
- = DENOTES PERMANENT REFERENCE MONUMENT (PRM)
- = DENOTES PERMANENT CONTROL POINTS (PCP)
- = DENOTES LOT CORNER

NOTICE:
 THIS PLAT AS RECORDED IN ITS GRAPHIC FORM, IS THE OFFICIAL DEPICTION OF THE SUBDIVIDED LANDS DESCRIBED HEREIN AND WILL IN NO CIRCUMSTANCES BE SUPPLANTED IN AUTHORITY BY ANY OTHER GRAPHIC OR DIGITAL FORM OF THE PLAT. THERE MAY BE ADDITIONAL RESTRICTIONS THAT ARE NOT RECORDED ON THIS PLAT THAT MAY BE FOUND IN THE PUBLIC RECORDS OF THIS COUNTY.